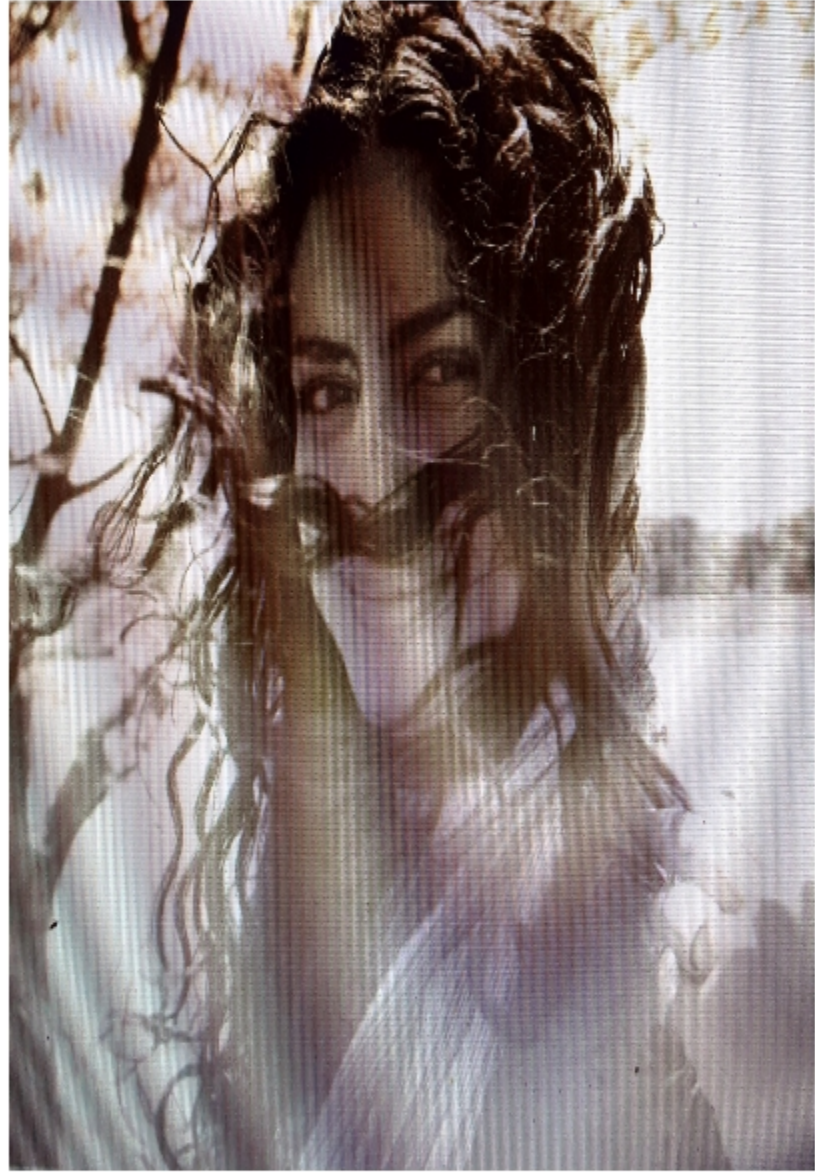


THE ART GALLERY

Exhibit Room #2

Dariana Arias



DARIANA ARIAS

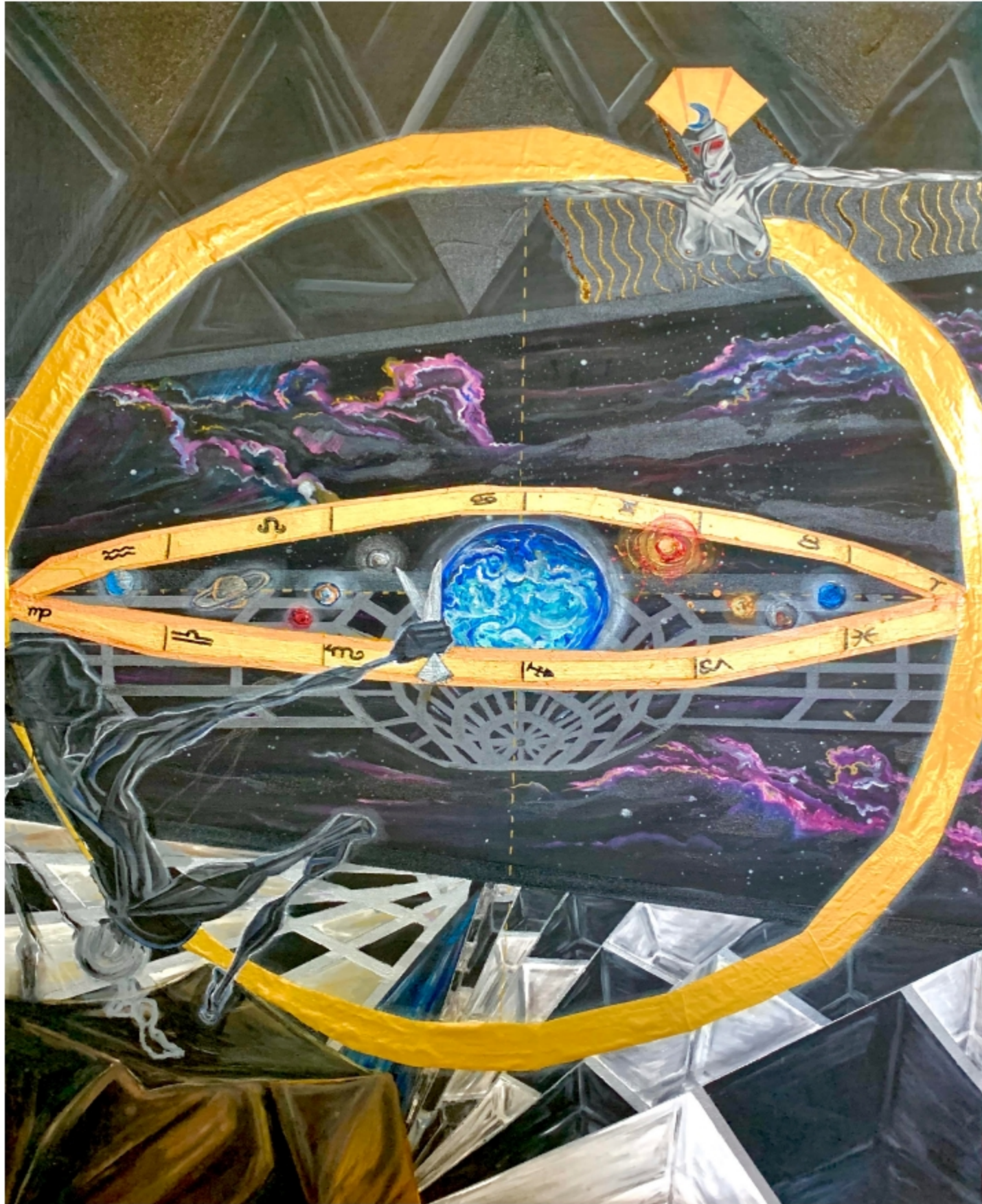
1. Based in Washington D.C.
2. Painting, drawing, digital art, NFTs.
3. Abstract expressionism, neo-surrealism, naïve art, erotic abstraction, cubism, geometric abstraction.

LUMINARIUM: COSMOLOGY, CELESTIAL MECHANICS & ESCHATOLOGY

The exhibit that you are about to view was successfully showcased for the first time in Washington D.C. You can read the art review by clicking the link provided at the end of the exhibit's statement.

Luminarium: Cosmology, Celestial Mechanics & Eschatology, is a series of artworks featuring mixed media paintings focusing on observational astronomy, cosmological latitudes and cosmic eschatology. *Luminarium* –latin for 'light' - is my introductory artistic rendition of the cosmos. The series takes its inspiration from *LIGO's* detection of gravitational waves, a discovery which confirmed Albert Einstein's ripples in spacetime. Additional inspiration was borrowed from my fascination with ancient cosmologies and illuminated Ptolemaic diagrams. The exhibit explores the interaction between science, art and culture, seeking to understand cosmic implications upon everyday Life. The series was originally comprised of 11 artworks, out of which only 6 are showcased in this 3D gallery. During the first exhibit, the paintings were arranged as a chronological astronomic timeline, and arranged by groupings sharing common themes.

Please click on the following link to read the exhibit's review on the Washington Post: [In the galleries: Delineating a cultural frontier.](#)



Title: Astronomy Showing Claudius Ptolemy a Geocentric Model of the Universe.

Media: Mixed media on handmade/stretched canvas.

Dimensions: 46" x 57" x 1.5"

Motif: Astronomy, ancient cosmology.

Artistic Style & Inspiration: Neo-surrealism, naïve art, geometric art, Ptolemaic diagrams.

The geocentric or Ptolemaic model of the solar system, is the ancient astronomical model describing the motion of the planets, the sun and the moon. This model held that the Earth was the center of the solar system, and the other heavenly bodies orbited around it. Modern science has invalidated this model, placing the sun at the center of the solar system instead. The Ptolemaic system was pioneered by Egyptian astronomer, mathematician, and geographer, Claudius Ptolemy, during the 2nd century AD.



Title: Crab Nebula.

Media: Mixed media on handmade/stretched canvas.

Dimensions: 18" x 51" x 1"

Motif: Astronomy, The Cosmos, Supernova.

Artistic Style & Inspiration: Abstract art, the cosmos.

"Crab Nebula" is the name given to the remains of an ancient star that exploded into a supernova. This cosmic beauty was first encountered by Chinese astronomers in 1054 A.D. and is filled with mysterious filaments that are tremendously complex and appear to have less mass than expelled in the original supernova.



Title: Jupiter's Great Red Storm, .

Media: Mixed media on handmade/stretched canvas.

Dimensions: 20" x 41" x 1.5"

Motif: Astronomy, jupiter, cosmic storms, the sublime.

Artistic Style & Inspiration: Abstract art, the incredible universe.

Jupiter Great Red Spot, is a gigantic storm located in Jupiter's southern hemisphere, with winds peaking at about 400 mph. It is believed that the Great Red Spot has been swirling over Jupiter's skies since the beginning of astronomical observation, at around 1665 AD. Scientists claim that the Jupiter's great spot is decreasing in size, but nevertheless, it reached a diameter 3 times that of planet Earth's.



Title: Einstein's Ripples in the Fabric of Space-time .

Media: Mixed media on handmade/stretched canvas.

Dimensions: 46" x 57" x 1"

Motif: Astronomy, gravitational waves, astro-physics.

Artistic Style & Inspiration: Neo-figurative portraiture, geometric art, Albert Einstein.

Gravitational waves are 'ripples' in the fabric of space-time caused by massive accelerating objects, like black holes. Albert Einstein predicted their existence in **1916**, in his general theory of relativity. On September 14, **2015**, LIGO detected gravitational waves originating 1.3 billion light years away, resulting from the collision of a massive pair of black holes. The discovery was declared as "one of the greatest scientific achievements ever," given that it proved Einstein's ripples in space-time.



Title: Código Maya: Excerpts from the Codex.

Media: Mixed media on handmade/stretched canvas.

Dimensions: 46" x 57" x 1"

Motif: Astronomy, Mesoamerican Cosmology, Eschatology, Calendars, Shamanism, Mayan gods Ekchuah, gods L & M.

Artistic Style & Inspiration: Neo-surrealism, abstract expressionism., mesoamerican art.

Maya codices are folding books stemming from the pre-Columbian Maya civilization, displaying hieroglyphic scripts. They contain information about astronomy, astrology, divination, rituals, magic, numerology, calendars, and shamanism, which reflect the Mayan peoples understanding of time. The names of the codices indicate where they are housed. Only three of these Mayan manuscripts survived the organized book-burnings of Franciscan missionaries following the Spanish Conquest.



Title: Vishnu Resting on Cosmic Couch.

Media: Mixed media on handmade/stretched canvas.

Dimensions: 25" x 57" x 1"

Motif: Indian Cosmology & Mythology.

Artistic Style & Inspiration: Cubist art, neo-figurative portraiture, abstract art, Hindu god of time.

In the basic Hindu trinity of Brahma, Vishnu is the preserver and protector of creation. Vishnu is the embodiment of mercy and goodness, the self-existent power that preserves the universe and maintains the cosmic order Dharma.